



LEEDS ART GALLERY



EXPLORE ARTS AWARD

Me in the gallery

Draw or photograph yourself in the gallery
Put it here...





Welcome to Leeds Art Gallery

You are an art explorer

You will discover, learn and make
but most of all have fun

Welcome to Leeds Art Gallery

There are lots of rooms to explore.

You can find paintings, sculptures alongside other artworks.

Where would you like to go?

There are archways to go through.

Touch the floor, the pillars, the stone staircase.

Parts of the building are old and some are new.

Look for the people who work here.

Are they wearing special t shirts or badges?

What do you think their jobs are?

Find Artspace and make your own artworks.

Stop by the entrance outside the Tiled Hall.

Can you smell food cooking?



What do you think art is about?

What do you think art is about?

- A response to how you feel, or think, or communicate
- A response to what you hear, touch, taste, smell or see
- A way of saying something
- A way of changing something
- Sharing new ideas
- Finding new ways of doing things



I think Art is about...

.....

.....

.....

.....

.....

.....

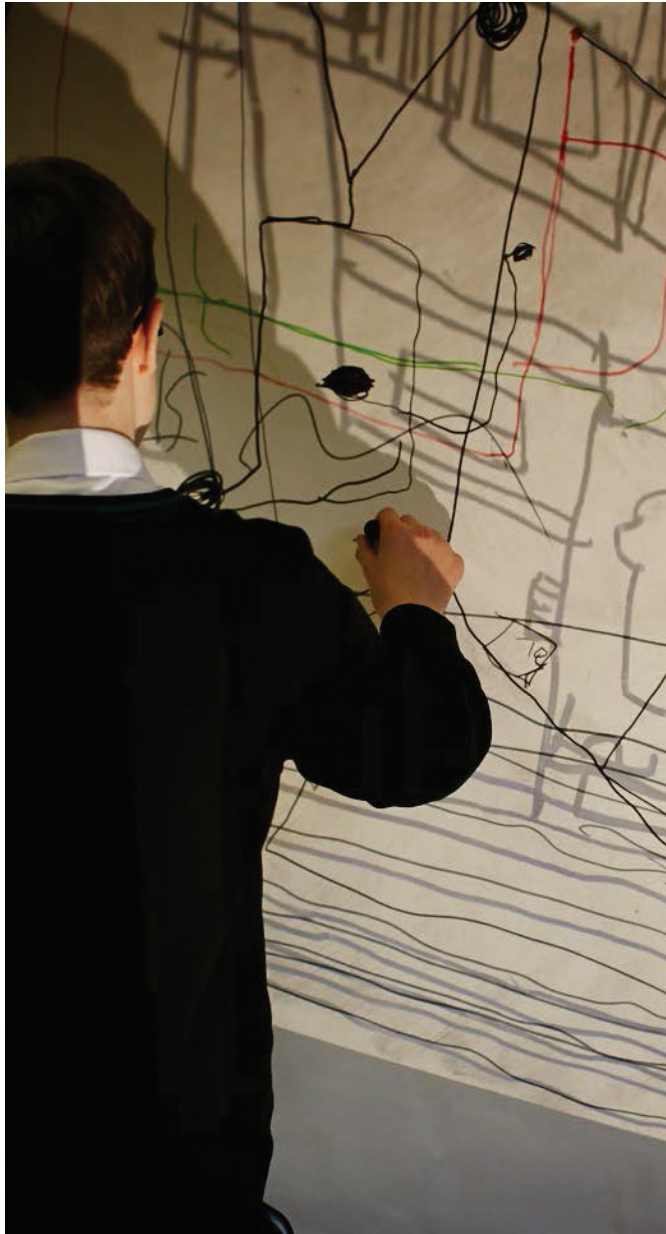
.....

.....

.....

.....

What have you used to make Art?



Have you ever

- Arranged leaves, stones or bits of plastic to make something
- Used your hands for squashing, rolling, squeezing
- Painted with jelly or ice cream or tomato ketchup
- Drawn with your big toe
- Made a print or with your body
- Changed the atmosphere of a room
- Joined objects that you have found
- Made a sound-sculpture
- Built with ice

I have made Art from...

.....

.....

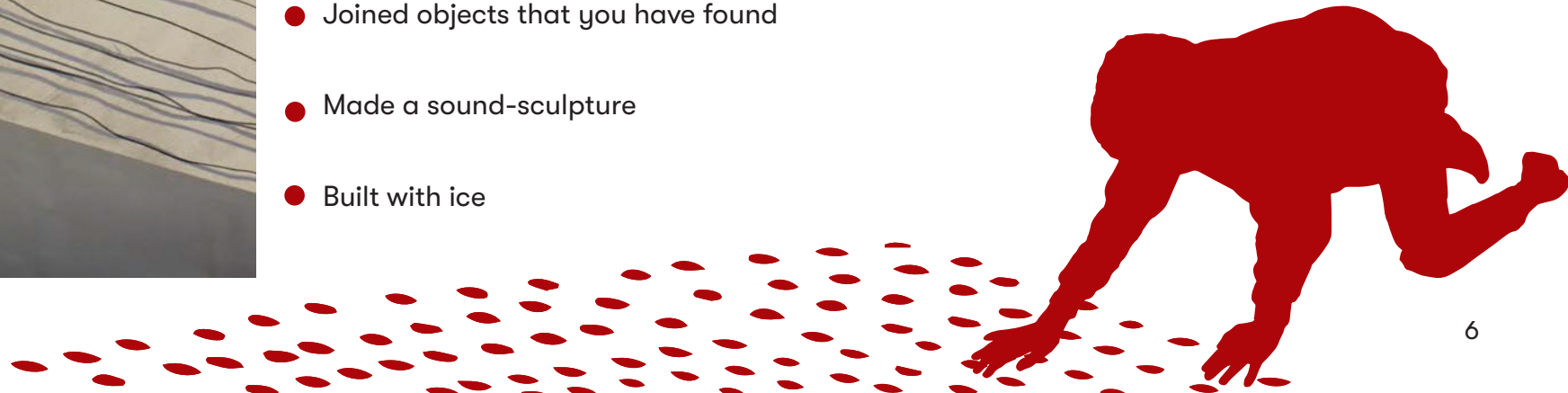
.....

.....

.....

.....

.....



What would help me be an art explorer?

I am good at lots of things...

My head for

My eyes for

My hands for

My mouth for

My voice for

My feet for

My nose for

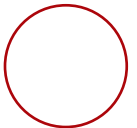
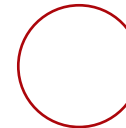
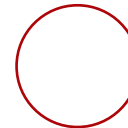
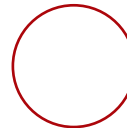
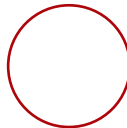
My ears for

How do you communicate your feelings?

This is one way to show what you like



What is your way?



love

like

okay

dislike

hate



What do I need to be an Art Explorer?

I'm taking some kit with me

Things to help looking

A magnifying glass, a wooden spoon with a hole in it, something to lie on to get a different view, a roll of paper that can be a telescope or a listening tool, coloured gels

Things to record with

A pencil and paper for writing or drawing, a sound-recorder, a camera

A map to find the way

threads, strings, coloured paper to make a trail

Symbols and pictures to show feelings, ideas or favourite things

Rules for keeping safe

Paint charts for colours

Tools tactile materials for texture investigation or an ipad for finding more things out

What else do you need?

Stuff I need...



Inspire

Things to do in Leeds Art Gallery

What I did...

- ☐ Draw a painting using texture fabrics
- ☐ Turn an artwork into a word poem
- ☐ Sing to a sculpture
- ☐ Dance with an artwork
- ☐ Design a costume for a sculpture
- ☐ Turn an artwork into a sound



Find spaces

Experiment

Look up, through, over, around, under, behind

Find how your voice changes in each room

Stretch out in a space

Make different shapes with your body

Make sounds that fill the room

Choose your favourite room in the Gallery

Make marks that show your feelings about being in Leeds Art Gallery...



Find spaces

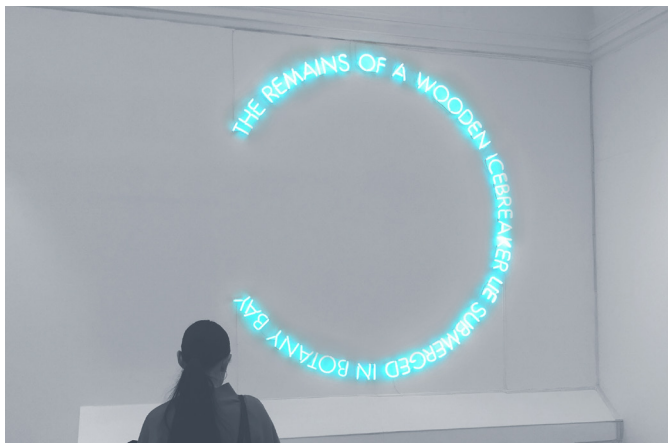
Choose an artwork that interests you.
Are there other artworks in the room?

Think about your artwork...

Who has made it?

What has it been made from?

What is its message or story?



Find drawings

Can you . . .

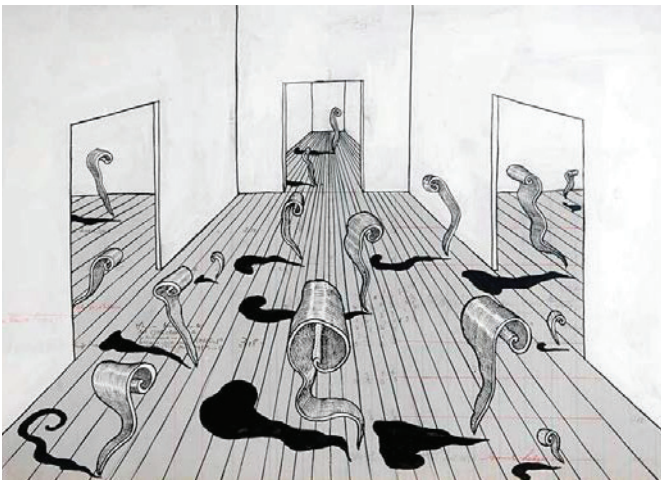
Draw in the air like the conductor of an orchestra

Draw with your finger on a partner's back.
Can they guess what you're drawing?

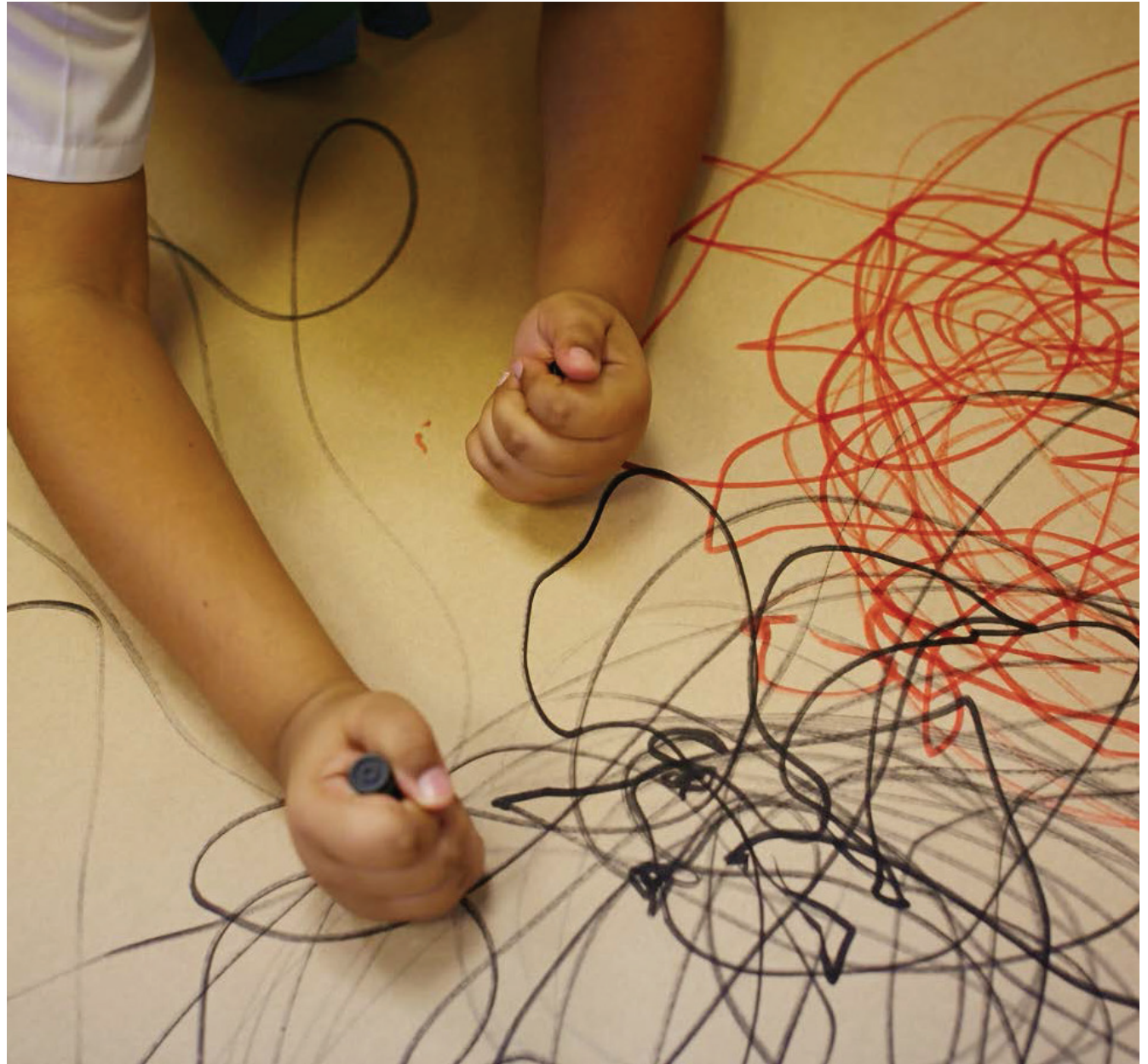
Draw the lines on the palm of your hand
using a pen on an acetate sheet

Draw on the floor with string

Draw the shapes of an artwork



© Edward Allington. Photo © Leeds Museums and Galleries.

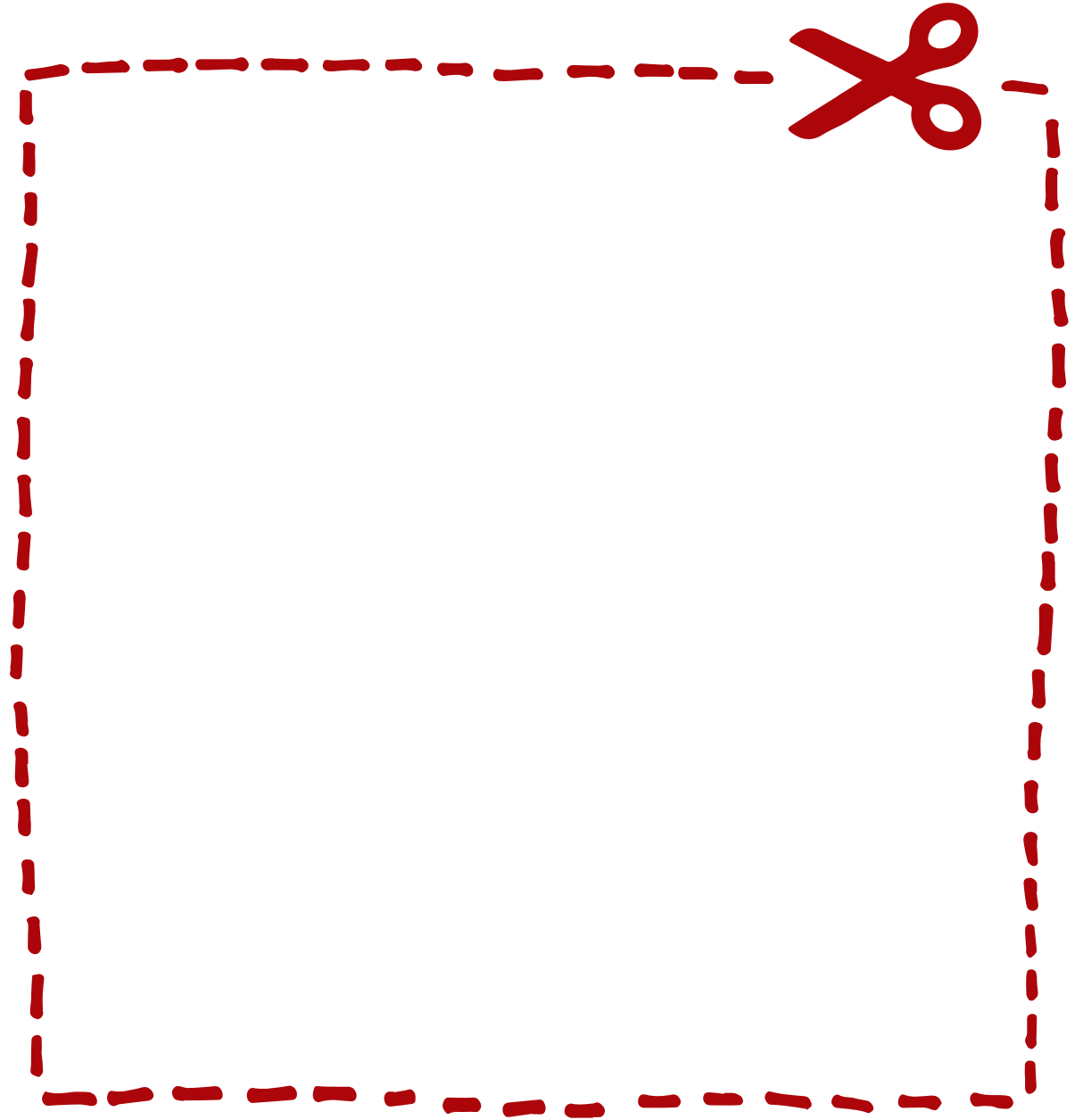


Find drawings

Some people think there are not enough drawings in the Gallery

Put some of your drawings around the Gallery

Where will you put them...



Find colours

Colour is all around us

Use a colour chart to find different colours in
Leeds Art Gallery

Where can you find colour?

Find the colours you like best. Make up a new
name for your favourite colour

In your imagination the colour might have a
sound, a smell, a taste, a temperature or a
texture. It might bring a memory or a story

Colour might inspire you do something

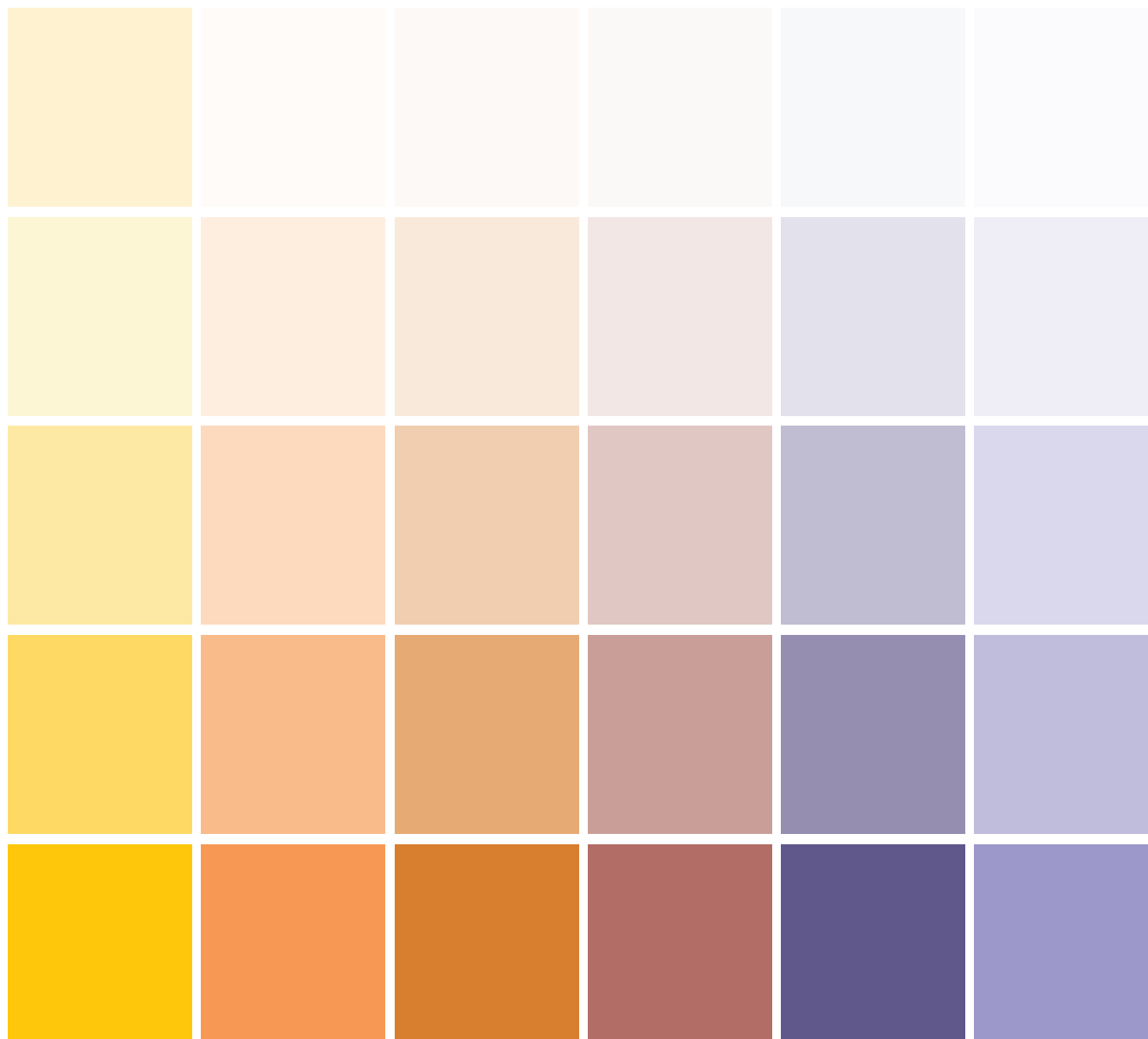
Find ways to change colour. You could . . .

Look through transparent, coloured film

Use torches to make colours brighter

Turn colour into sound using your body

Make colour 3D using plasticine, ice or food



Find textures

Explore places in the Gallery that you can touch

My textures for artwork...

Feel the surfaces of walls, floors, pillars, stairs, doorways and the materials in Artspace

What things do you like to touch?
Are they hard, soft, warm, cold?

Hold paper, foil, fabric or clay in your hand.
Squash it, scrunch it, roll it, rip it, twist it, tear it, wrap it. Feel how it changes.

Hold your hands out in front of you. Pretend to touch something that is sticky, hot, slippery or bumpy

Use this way of investigating to explore artworks

What texture will you use in your own artwork?

Find a sculpture

Find a sculpture that is bigger or smaller than you

Find a sculpture that shows or changes how you feel

You can . . .

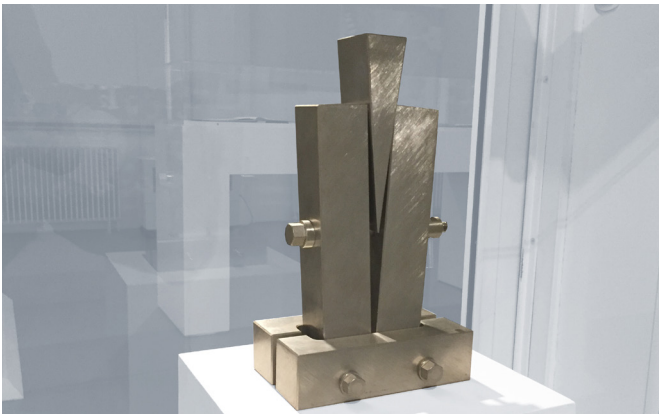
Change your viewpoint.

Lie on the floor, on your back, on your tummy

Find out about the materials and tools the artist has used

Spread objects around you and investigate them with all your senses

Hide objects under fabric, and explore how they change



Find a sculpture

Make a sculpture to show how you feel...

You could

- Think about texture, colour, weight, shape or temperature to help decide what to use to make it
- Experiment with everyday materials such as bicycle tyres and inner tubes or wrappings from your packed lunch
- Use things of your own
- Collect, arrange, balance, what you have chosen
- Cover yourself with fabric, foil, paper and make yourself into a sculpture
- Fill a room with favourite sounds or things to touch
- Put your artwork on top of a special box to show it off



Find a Landscape

A Landscape shows features of an area of land

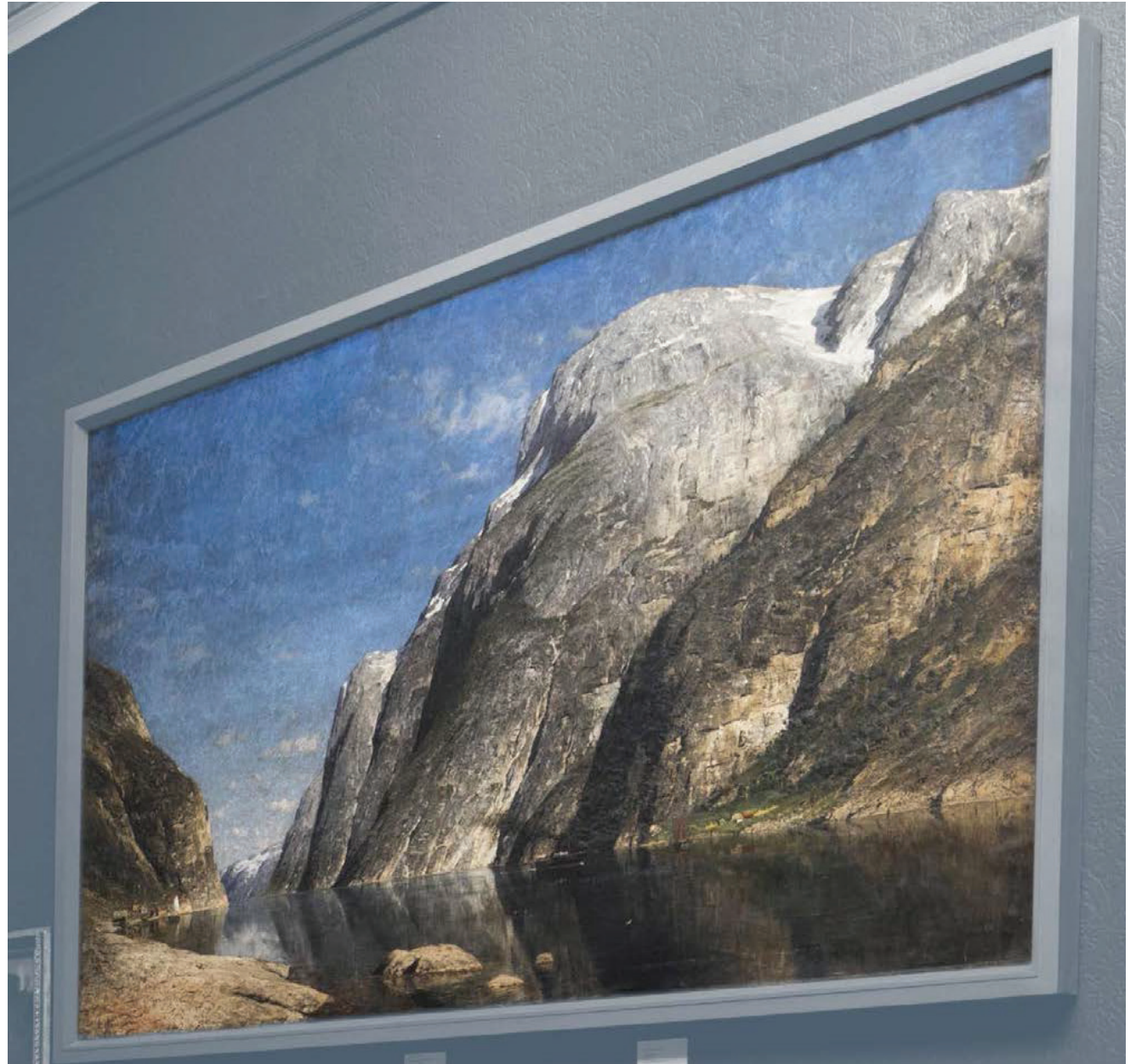
What is in this Landscape painting?

How has it been made?

What is the most important part of the artwork?

Landscapes can be found in everyday life or imagined. They can be remembered using all of our senses

Find a Landscape artwork that inspires you



Find a Landscape

Can you . . .

Use sounds, music, photography to tell the story of a landscape

Use bodies or rope to make a landscape on the floor – a high mountain, a small hill, a river to swim in or cross over

Make a story from landscape, memories and your imagination

Make a landscape from masking tape, cardboard and string

Find objects in a landscape to make a new one - ice, dirt and pebbles, thrown-away things that are safe to pick up, sounds you have collected using a phone



Be a Gallery detective

When you are in Leeds Art Gallery find out. . .

Who works here, what jobs do they do?

- Curator
- Fundraiser
- People who give money-or add it up
- Educator
- Artist
- Picture Framer
- Restorer
- Decorator
- Builder
- Health and Safety Officer
- Cleaner
- Lighting
- Technician



Find Contemporary Art

Leeds Art Gallery has always bought 'art of its time'. Over the years this new art has grown old. Sometimes old and new artworks are displayed together

Investigate . . .

Find an artwork that is older than you

What makes an artwork look new?



Find Contemporary Art

Sometimes old and new artworks are displayed together

Which artwork would you display next to this one by artist Simon Fujiwara?



Bring old and new things together

Your turn . . .

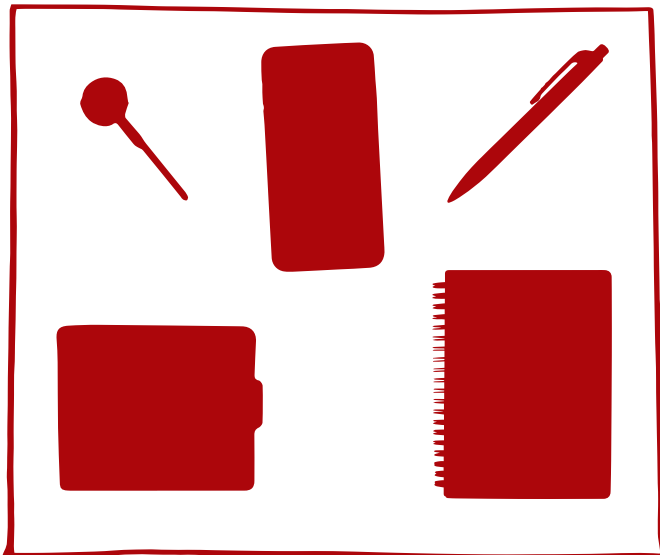
Make a collection of old and new objects

What is the theme that helps you choose what to include in your collection?

Add sound or words to help people understand your theme

Give your collection a title

Make a diagram of your collection and show what goes next to what



Bring old and new things together

You're in charge

What changes would you make to Leeds Art Gallery...

Colour the walls, windows, floors.

Use coloured acetate gels to see what could happen

Shape change pillars with paper, cover seats with fabric

Sound paintings to show what is going on.

Some rooms need music, use ipods, instruments, or voices to add sound to the Gallery

Sense interpret artworks by matching smells, tastes and textures to things that you see

Make captions /labels/symbols/drawings or sensory trail to help other people 'sense' artworks

Find artworks in the gallery

Page 2

- A Little Chid (1888) by George Clausen
- Portrait of Chloe Boughton-Leigh (1910-14)
by John Gwen
- Portrait of Mrs Mounter (c.1916) by Harold
Gilman

Page 5

- Image by Dan Sumption

Page 9

- Anonymous after Giambologna Mercury
(Unknown date)

Page 10

- Arena (2000) by Alison Wilding

Page 11

- The Remains (2007) by Roger Palmer

Page 16

- Wedge and Columns (1967) by Roy Kitchin
- Statue of Queen Anne (1712) by Andrew
Carpenter

Page 18

- The Sognefjord, Norway (1885) by
Adelsteen Norman

Page 21

- Venus (1817-20) by Antonio Canova

Page 22

- Sculpture (2012) by Simon Fujiwara

This is what I found out about Leeds Art Gallery...



Congratulations

Now you have finished your research.

Use what you have discovered to make your own artworks...

