

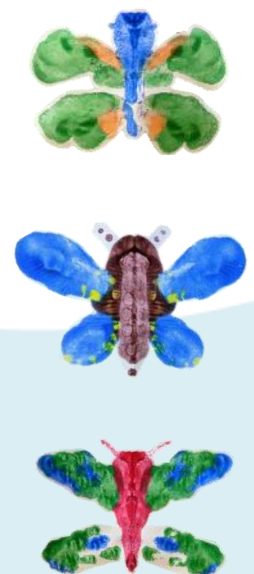
Try folded symmetry painting!

This craft can get quite messy, so make sure you've got some newspaper or a wipe-able surface to work on! We've stuck to the themes of spring and Easter for our paintings, but you could create anything you like. Why not just splatter and fold and see what happens? What do the shapes and colours look like to you?



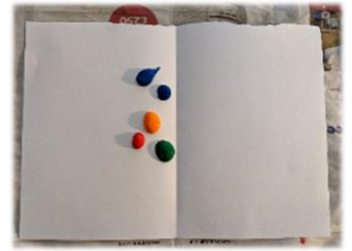
Equipment

- Different colours of paint
- Paint brush or spoon (something to apply the paint)
- Paper
- Pencil
- Scissors
- Cup of water for cleaning your brush/spoon between colours
- Optional extras for creating a scene out of your paintings:
 - Glue or blue-tack
 - Felt-tips or pencil crayons
 - Celery/potato for veg printing



Basic Method

- 1.** Fold a sheet of paper in half and unfold, leaving a crease up the middle.
- 2.** Use the paint brush or spoon to add blobs of different coloured paint on one half of the paper. Remember, when you re-fold the paper the paint will be squashed and spread outwards, so a small blob goes a long way!
- 3.** Carefully fold the paper back along the crease. Press down on it with your hand to ensure the paint is transferred from one half to the other. You could also smooth it with your fingers to force the paint in different directions.
- 4.** Open up your folded paper to view your symmetrical creation! What does it look like? A flower? A particular animal?
- 5.** Leave to dry (could take around half an hour), then cut out if preferred.



To make a butterfly (or any specific design)



Follow the same steps as above, but before applying paint, **lightly sketch out half a butterfly outline on one side of the paper**, so its centre is in line with the crease.

When applying paint, **add blobs within the outline, a few centimetres from the edge**. Hopefully when squashed, the paint will spread roughly within the shape you drew! (This is not guaranteed to work, but does give you a bit more control.)

To make an Easter egg



Repeat the “Basic Method” outlined above.

When the paint has dried, either:

- Place something oval/egg shaped onto the best bit of your design and draw round it with a pencil. Cut it out.

Or:

- Re-fold your painted paper along the original crease. On one side, sketch half an egg up against the crease. Whilst still folded, cut along the sketched line. Unfold to reveal a painted egg shape.



To make a scene with extra details

1. Cut out your different symmetry paintings.
2. Arrange them on another sheet of paper – try a different colour if you have one!
3. When you’re happy with the arrangement, glue down the cut-out paintings.
4. Use felt tips or pencil crayons to add any extra details such as flower stems.
5. For a bit of variation, why not try adding some vegetable printing to your scene? Coat a slice of celery or potato in paint and press it onto paper. We found this worked well for flowers and caterpillars!

