

Your visit to...

# Leeds Industrial Museum



**Leeds**  
CITY COUNCIL



Supported using public funding by

**ARTS COUNCIL  
ENGLAND**



See



Touch/Feel

When I visit Leeds Industrial Museum, there are lots of things I might see, touch/feel, hear or smell.



Hear



Smell

---

**When I arrive at Leeds Industrial Museum...**

I may come from the main car park.

I may hear traffic going past.



---

I can turn left out of the car park.

I can go down the drive way to the main entrance.

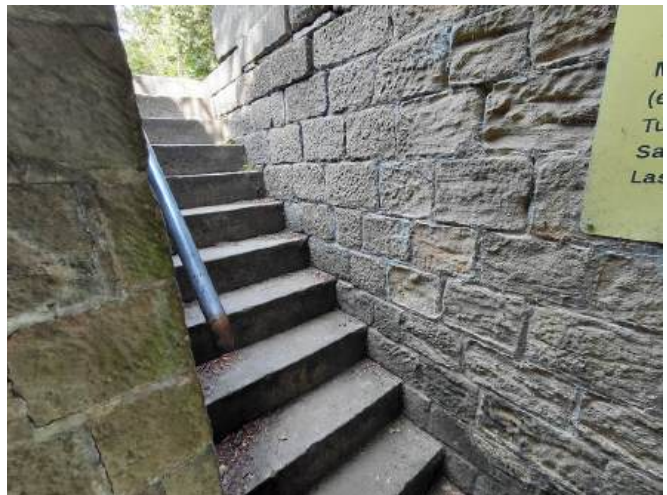




Or I can use the entrance from the  
Leeds Liverpool Canal.



I can go up the steps from the  
canal.



I can walk through the Colour  
Garden, along the cobbled path to  
the main entrance.



I will see a big building with a yellow sign over the door.

I might hear birds, people talking, canal boats or bicycles.



I can go in through the red automatic doors into the shop.

I may hear the fridge, the till and people talking.



I will see a Visitor Assistant at the Welcome Desk, they will be wearing a black uniform.

I can show them my ticket or buy a ticket from the Welcome Desk.





**If I need the toilet...**

I can go up the stairs to the right of the shop.



When I get to the top of the stairs I will see male and female toilets.

I will hear a ticking clock.



**If I need an accessible toilet...**

I can turn left from the shop into the Textile Gallery.



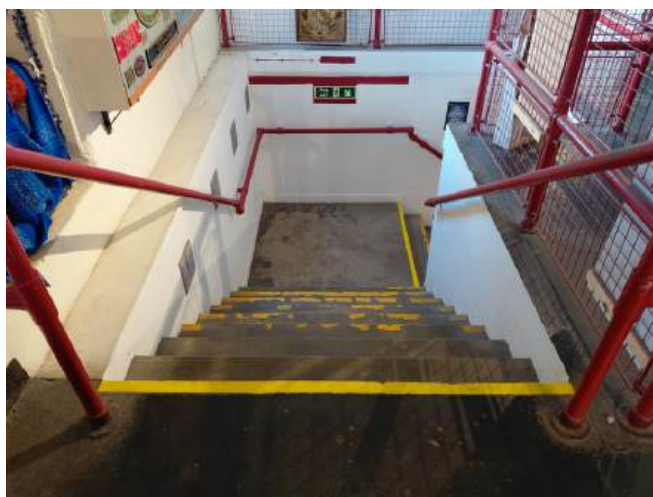
I can turn right when I get to the stairs.

I will find an accessible toilet opposite the woollen spinning mule.

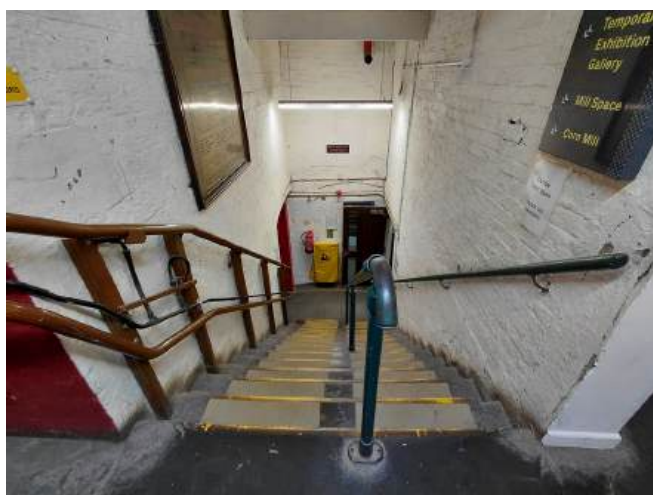


I can also find a toilet in the Mill Space.

I can go down the stairs in the Textile Gallery.

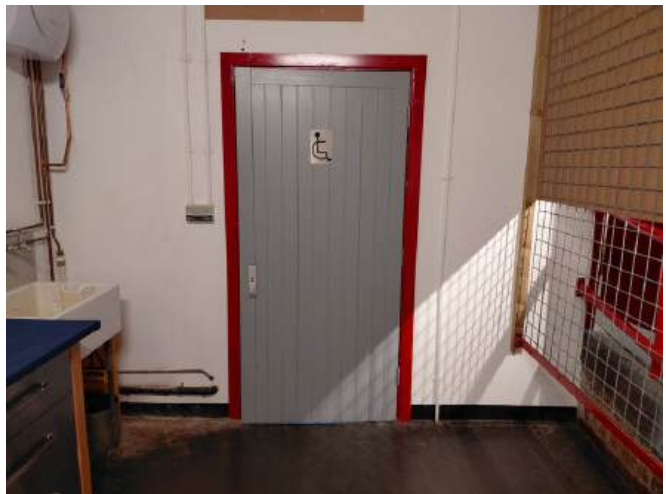


I can turn right and go down the steep stairs.



I can turn left into the Mill Space.

I will see the toilet on the right.



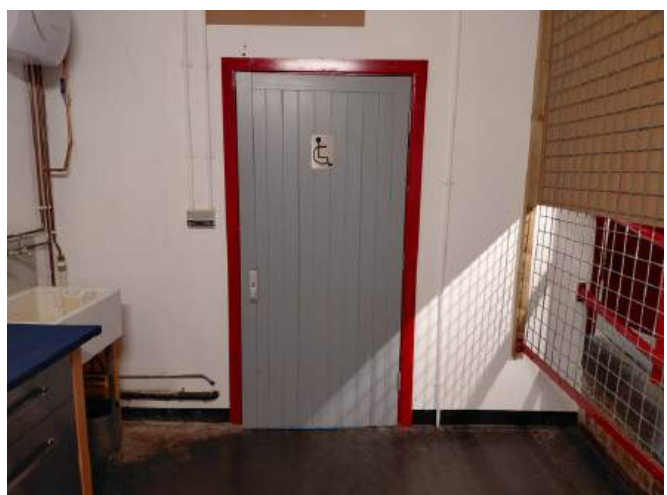
Or I can take the lift from any floor.

I will need to ask a Visitor Assistant to help me if I need to use the lift.



I will need to go through the museum store into the Mill Space.

I will see the toilet on the left.





## **Lunch Space...**

If I turn right from the shop I will find the lunch space.

I may hear the fridge.



I can get a drink in the lunch space if I choose to.



## **Getting around the museum...**

I will enter the museum on the top floor.

I can choose to go into the Textile Gallery.

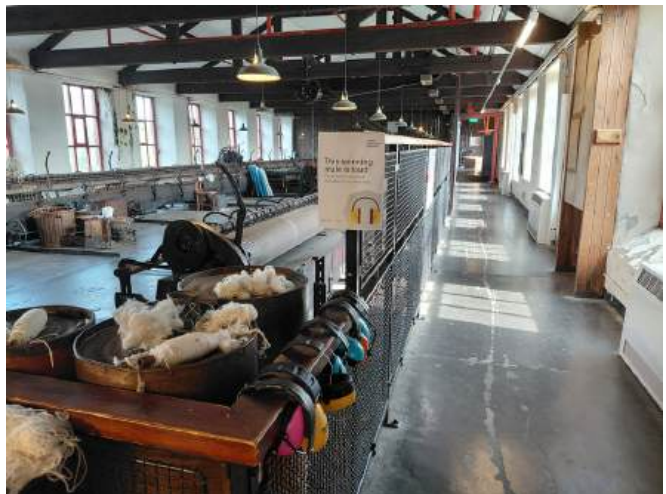




I will see a woollen spinning mule.

I may see a Visitor Assistant using the mule.

This can be noisy so I might want to use a pair of ear defenders.



I can choose to go through the Textile gallery.

I can sit on the benches.



I may hear videos being played.



I can choose to go down to the second floor by using the stairs.

The stairs will take me to outside the Palace Picture House.



Or I can use the lift.

I will need to ask a Visitor Assistant to help me use the lift.

The lift will take me to the Tailoring Gallery.



**On the second floor...**

I will find the Palace Picture House.

I may see and hear films being played.



The lighting is darker in the Palace Picture House than the rest of the museum.

I may need to take some time to adjust to the new light levels.

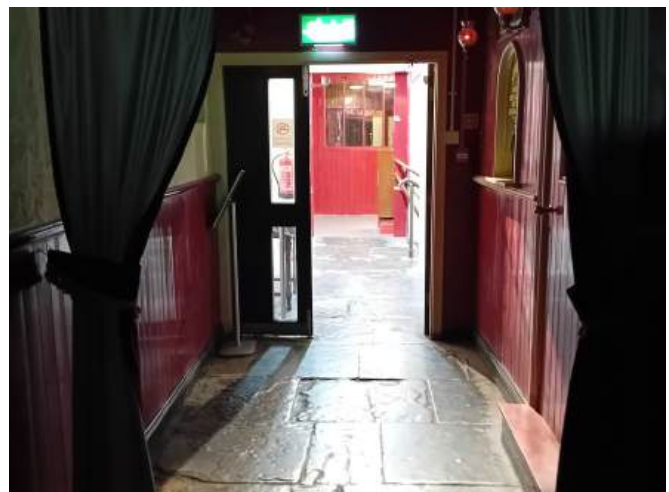


I can sit on one of the benches or seats in the cinema.



I can come out of the cinema.

I may need to adjust to the brighter light levels.





I may choose to go into the Media in the Mill gallery.

I will see large cinema projectors.

I may hear the films playing in the Palace Picture House.



I can choose to go into the Temporary Exhibition.

This room changes every 1 - 2 years so may look different.

This is the exhibition in July 2025.



If I go through the Temporary exhibition, I will see the Mini Makers Studio on my left.



I can choose to go through into the Tailoring Gallery.



The lighting in the Tailoring Gallery is darker than other parts of the museum.

I may need time to adjust to the light levels.



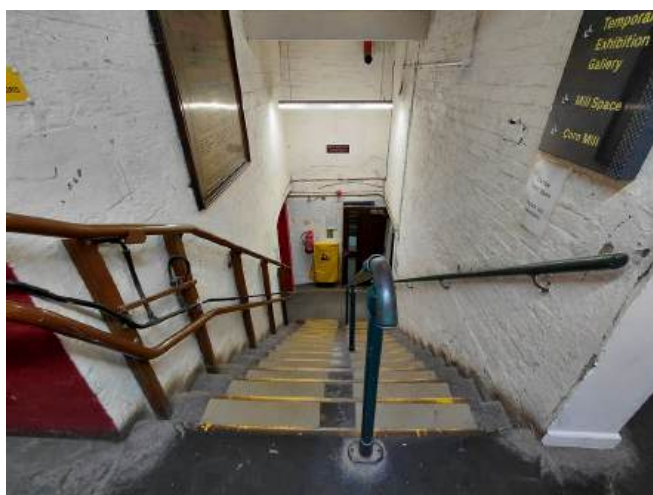
I may hear a video playing.



I can use the stairs to get to the Temporary Exhibitions.

I will need to go back through the Tailoring Gallery, Temporary Exhibition and Media in the Mill.

I will see the steep stairs on my left.



Or I can use the lift.

I will need to ask a Visitor Assistant to help me use the lift.

I will need to go through the museum store to the Mill Space.



I can choose to turn left at the bottom of the stairs into the Mill Space.

This is a temporary exhibition and will change every 1 - 2 years.

This is the exhibition 'Reel-ise' in July 2025.





I can choose to go into the Corn Mill.

This is a Temporary Exhibition and will change every 1 - 2 years.

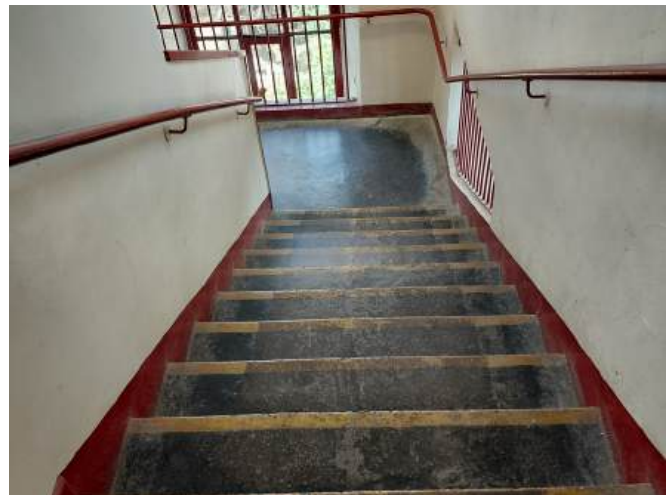
This is the 'Engineering' exhibition in July 2025.



## **To get to the ground floor...**

I can go down the stairs from the Textile or Tailoring Galleries.

I will see the Schoolroom but this is only open for school groups.



Or I can use the lift from any floor.

I will need to ask a Visitor Assistant to help me use the lift.



I can turn left out of the lift.

I will go through some scaffolding  
to the Power House Gallery.



I can choose to go into the Power  
House Gallery.

I will see large and small engines.

I may hear a dehumidifier.



I can choose to come out of the  
Power House Gallery to the  
bottom of the stairs.

I may see the Mill Engine through  
a window.



If I need to use the lift when I leave the Power House Gallery I will need to ring the bell.

A Visitor Assistant will come to help me.



**When I am ready to leave...**

I can go back to the top floor.



I can leave through the red automatic doors.

