



Your visit to...

LEEDS *city* MUSEUM

Visual Story



Supported using public funding by
**ARTS COUNCIL
ENGLAND**

When I visit Leeds City Museum there are lots of things I might:



See



Touch/Feel



Hear



Smell

When I arrive at Leeds City Museum...



I will see a big building with a sign over the door.



I might hear traffic, birds, people talking or noise from cars.



To get to the museum entrance...

I can walk up the stairs at the front of the building and go through the blue doors.



To get to the museum entrance...

Or I can use the ramp to the left of the building and go through one of the blue doors.



When I enter the museum...



I will be greeted by a Visitor Assistant.



I can ask them to explain how I should navigate the museum.



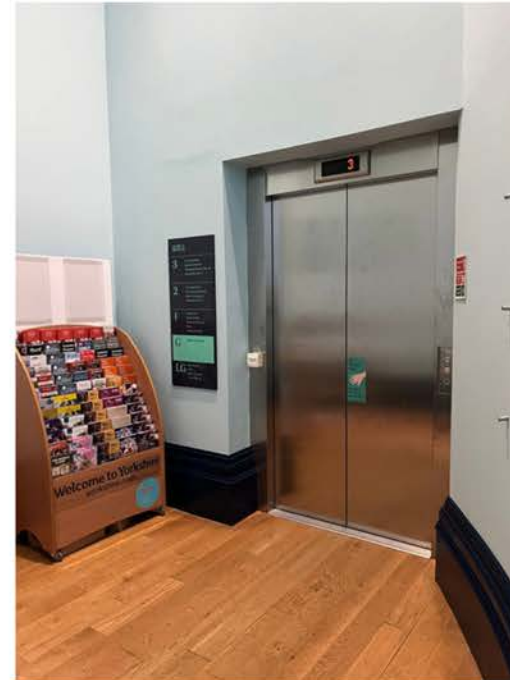
If I want to go to the toilet...



If I want to go to the toilet...



I can take the stairs or the lift to the Lower Ground Floor.



When on the Lower Ground Floor...



I should turn to the right and will see signs for the toilet.



When on the Lower Ground Floor...



If I go through the arch I will see male female and accessible toilets.



If I would prefer to use a gender neutral toilet...



I can take a lift to the
Third Floor and turn
right.



If I want to use the changing places facility...



If I would prefer to use a gender neutral toilet...



I can take a lift to the
Third Floor.



On the third floor...



I should turn right and will see the door to the changing places facilities.



If I want to go to the café...

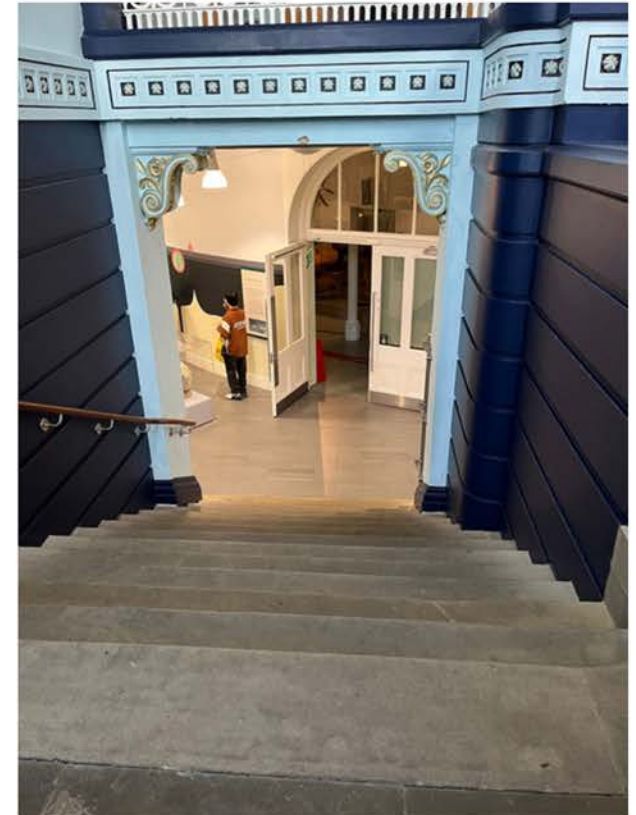


Herbarium Café

If I want to go to the café...



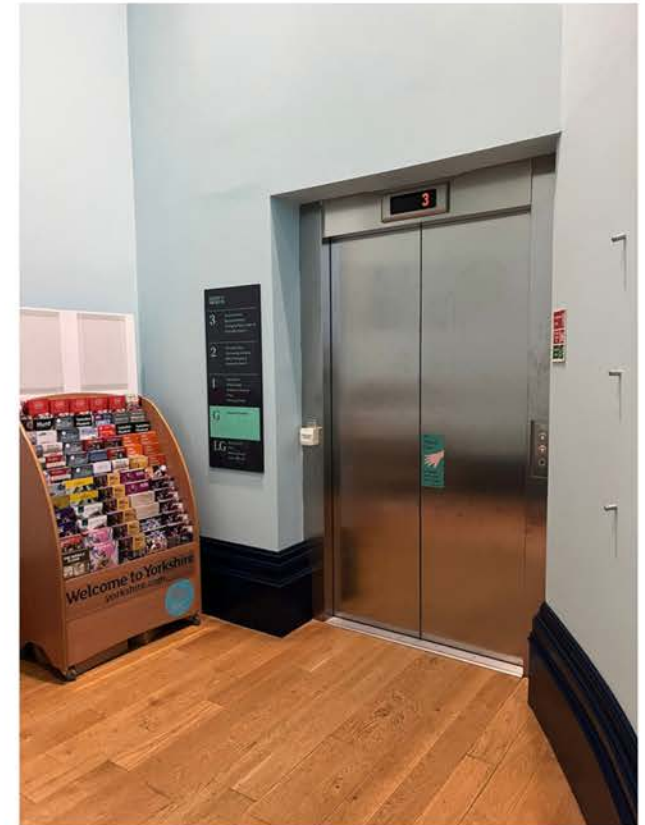
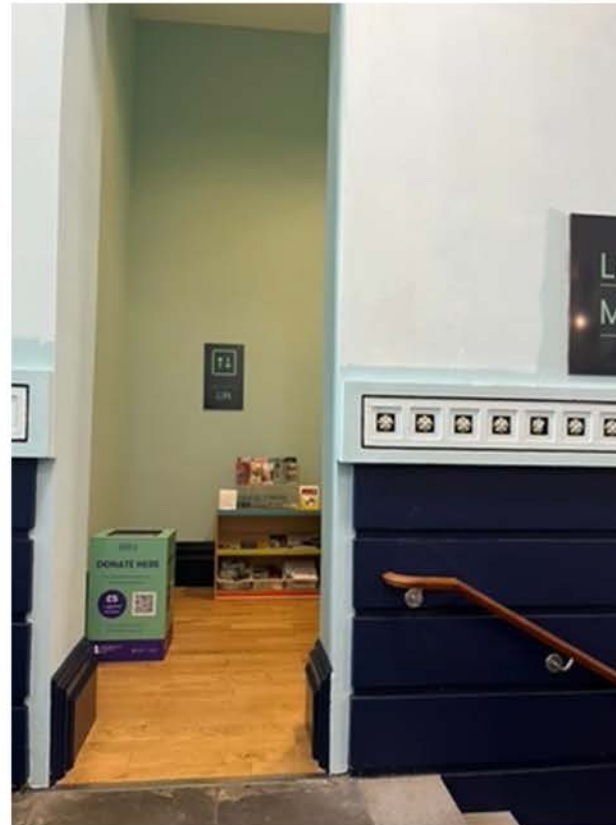
I can take the stairs down to the Lower Ground Floor.



If I want to go to the café...



Or I can go through the arch on the Ground Floor and take the lift.



When on the lower ground floor...



I should turn to the right and will see the entrance to the cafe at the end of the corridor.



When in the café...



I can purchase food and drink at the counter.



I will see a menu that I can use to help me choose what I want.



When in the café...



I can sit at the tables.



I might hear the
sound of the
coffee machine.



If I want to visit the exhibition spaces

I can choose to go anywhere in the museum but this visual story will take me on a suggested route.



Visiting the Lower Ground Floor Exhibitions...



On the Lower Ground Floor, I will find the life on earth gallery, and the cafe.



To get to the Lower Ground Floor...



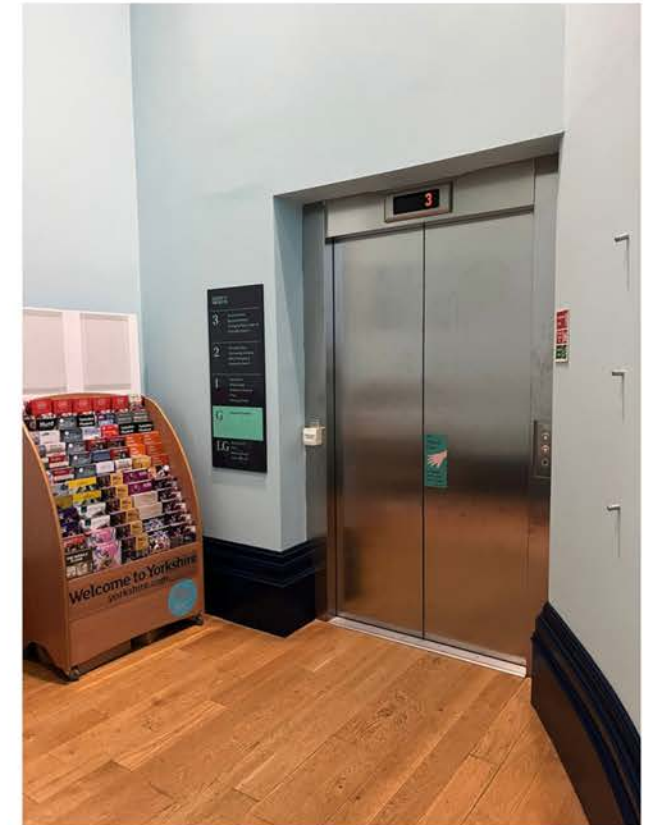
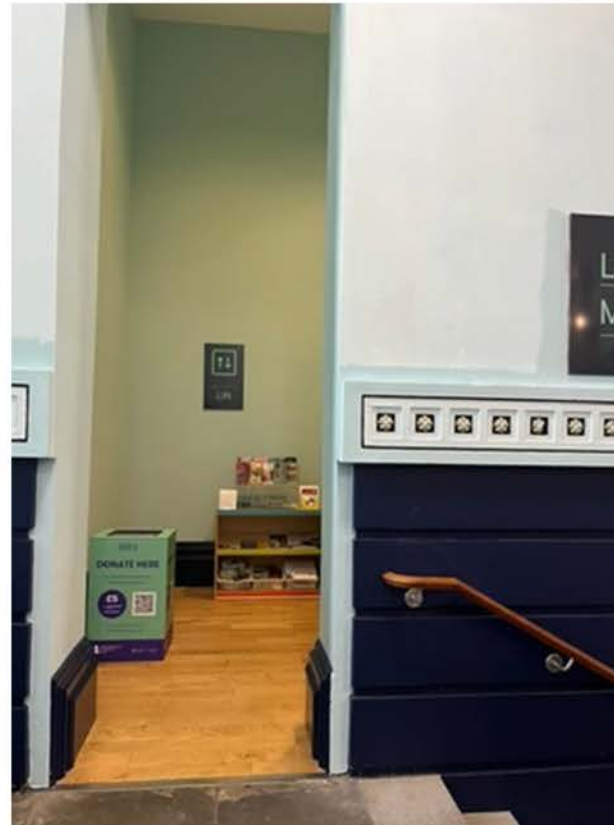
I can take the stairs on the left.



To get to the lower ground floor...



I can go through the arch on the Ground Floor and take the lift.





At the bottom of the stairs...



I will see the
entrance to the
Life on Earth
gallery



I might hear
sounds from the
café





In the Life on Earth Gallery...



I will see
skeletons and
stuffed animals
(taxidermy)



I will hear nature
sounds from the
speakers.





In the Life on Earth Gallery...



There will be videos that I can watch.



There will be places for me to sit down.



In the Life on Earth Gallery...



There will be things for me to touch and interact with.



When I am ready to leave the Life on Earth Gallery...



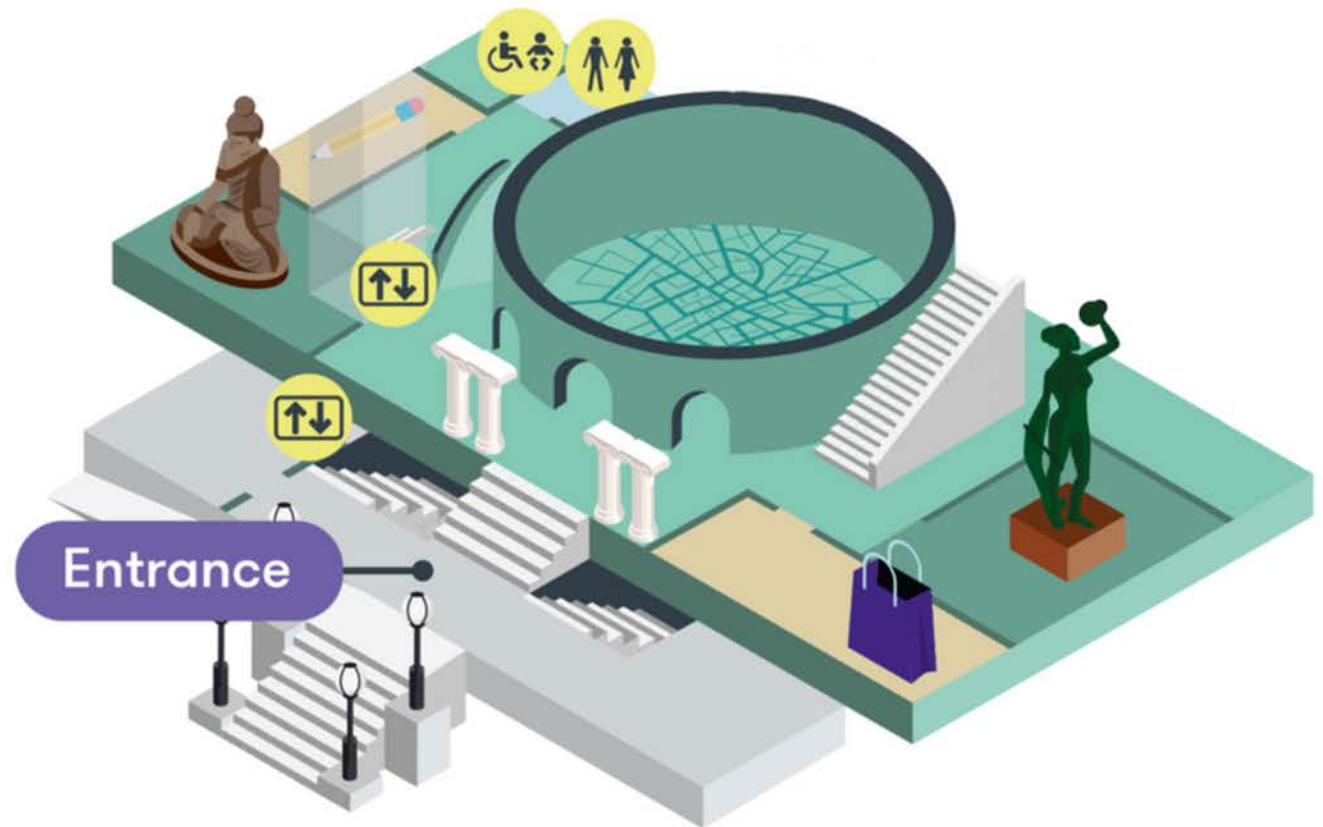
I can leave through the way I came in.



Visiting the First Floor...



On the First Floor, I will find the Voices of Asia gallery, the Brodrick Hall, the Gift Shop and the Collectors Cabinet.



To get to the First Floor...

I can take the stairs



or use the lift



When on the First Floor...

I can choose to turn left into the voices of asia gallery.



In the Voices of Asia Gallery...



I will see lots of
bright colours
and patterns.



In the Voices of Asia Gallery...



I might hear the
sound of videos
playing.



When on the First Floor...

I can choose to turn right into the Collectors Cabinet.



In the Collectors Cabinet...



I will see lots of cabinets full of objects.



I might hear noises from the gift shop.



In the Collectors Cabinet...



Parts of the exhibition can be darker than others.



When on the First Floor...



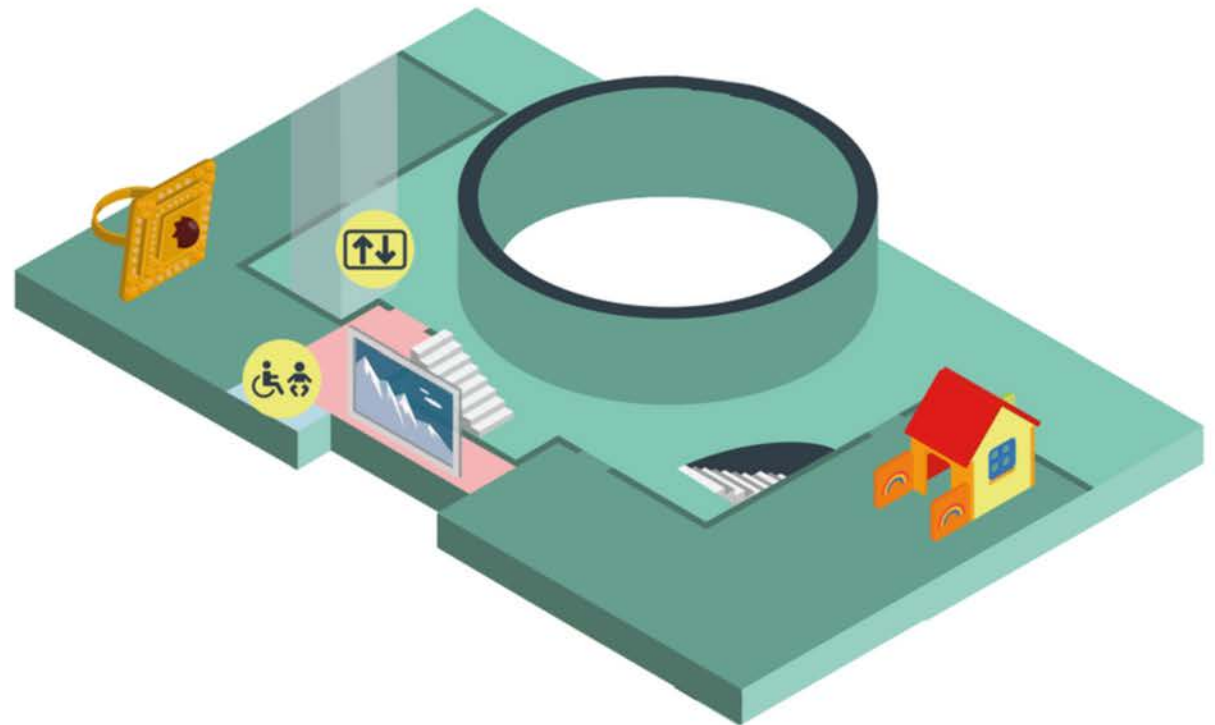
I can also choose to visit the gift shop.



Visiting the Second Floor...

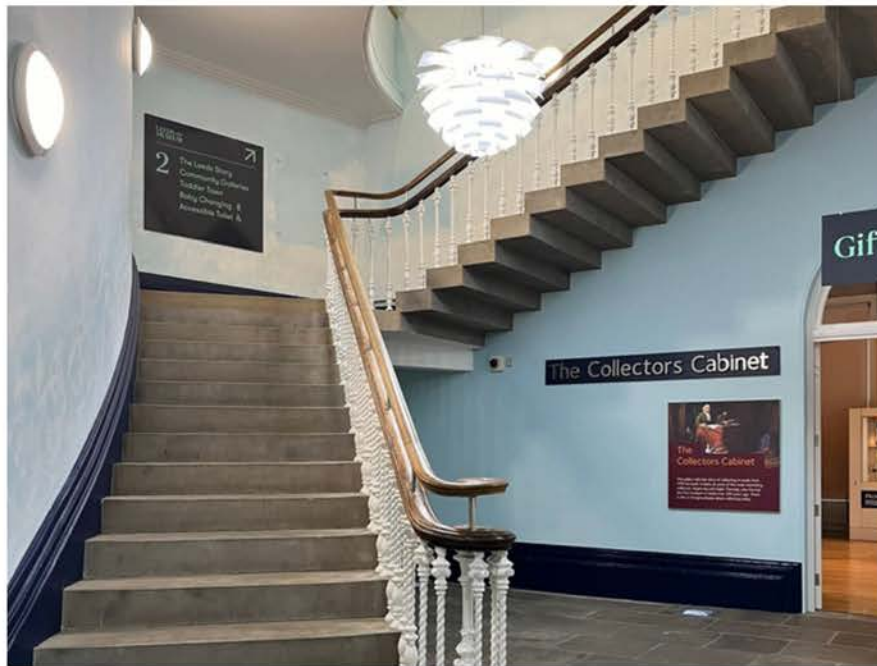


On the second floor, I will find the Leeds Story gallery, the Community Corridor and Toddler Town.



To get to the Second Floor...

I can take the stairs



or use the lift



When on the Second Floor...

I can choose to turn left into the Leeds Story gallery.



In the Leeds Story gallery...



There will be things for me to touch and interact with.



In the Leeds Story gallery...



Parts of the exhibition can be darker than others.



In the Leeds Story gallery...



I might hear noises from videos in the gallery.



In the Leeds Story gallery...

I can choose to walk through the Community Corridor.



In the Leeds Story gallery...

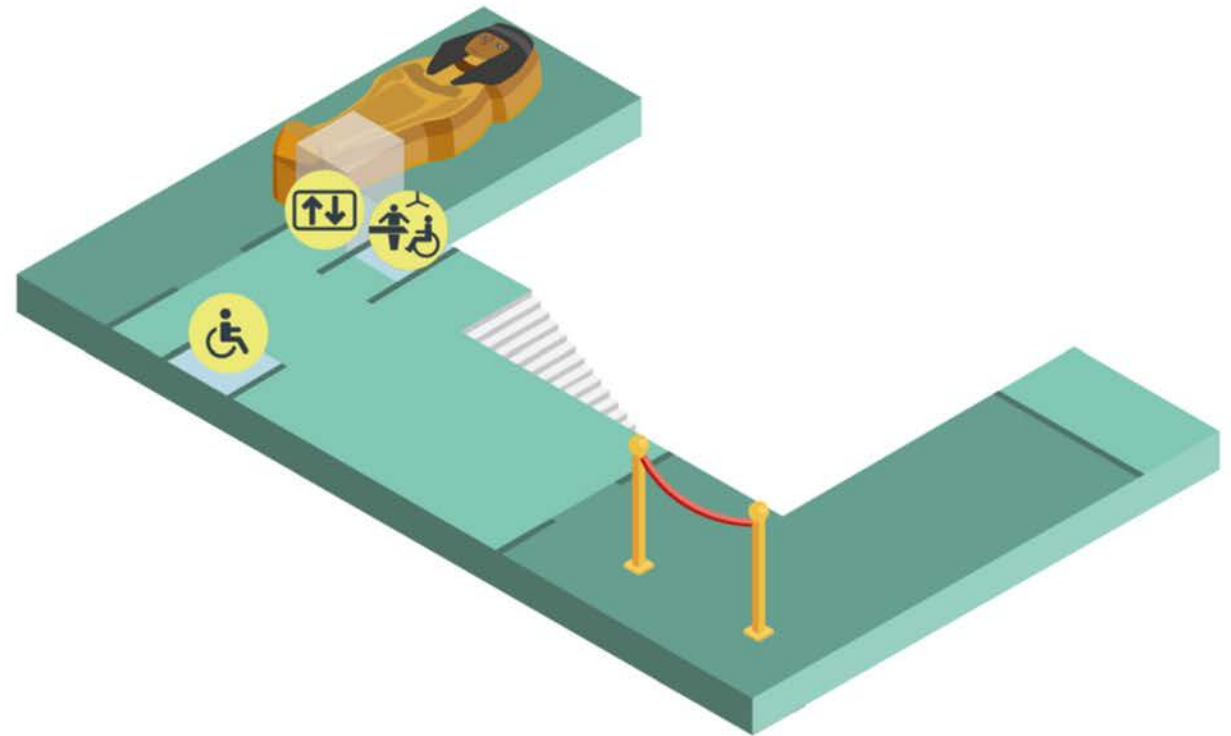
I will see the entrance to Toddler Town.



Visiting the Third Floor...



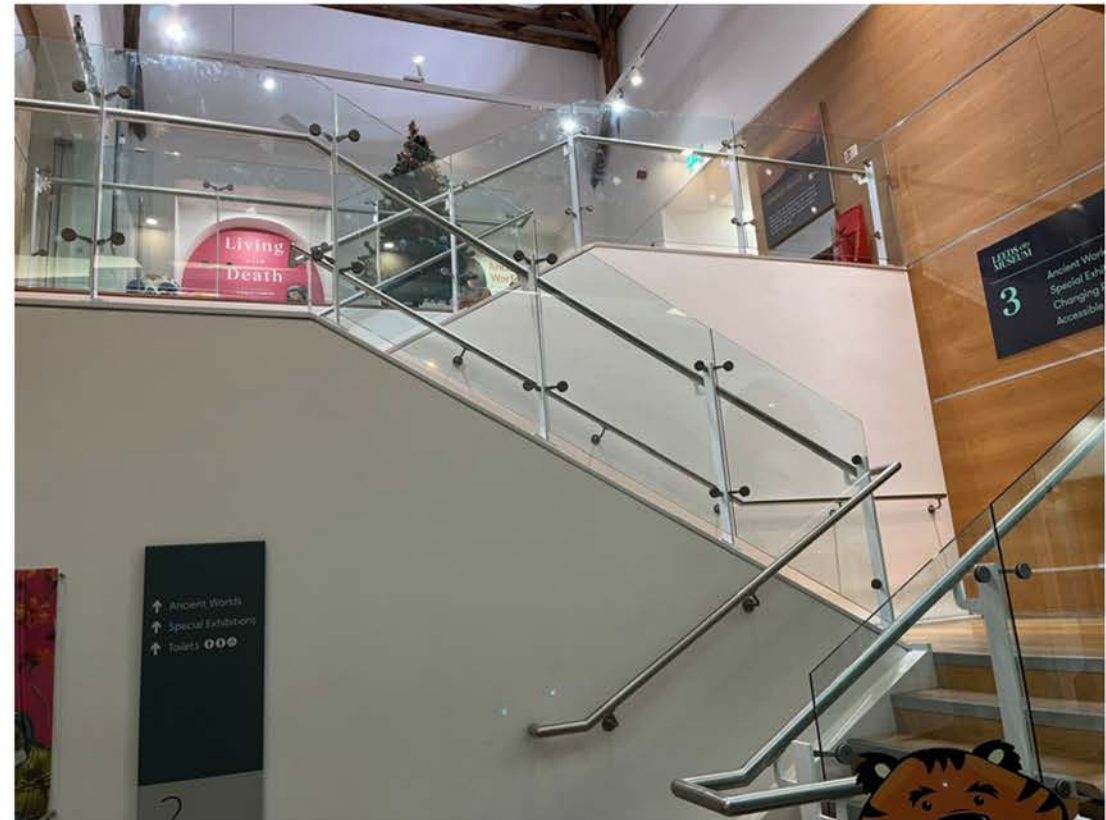
On the Third Floor, I will find the Ancient Worlds gallery and the Special Exhibitions gallery.



To get to the Third Floor...



I can take the stairs



To get to the Third Floor...



Or I could use the lift.





When on the Third Floor...

I can choose to turn left into the special exhibitions gallery.

This gallery will change a few times a year. I can find a visual story for the latest exhibition on the museum website's access page.





When on the Third Floor...

I can choose to turn right into the Ancient Worlds gallery.



In the Ancient Worlds gallery...



I will see lots of
different objects
in a large room





In the Ancient Worlds gallery...



There will be videos that I can watch.



There will be things I can touch and interact with.



In the Ancient Worlds gallery...



I might hear the sound of videos or music playing.



In the Ancient Worlds gallery...



Parts of the exhibition can be quite dark.



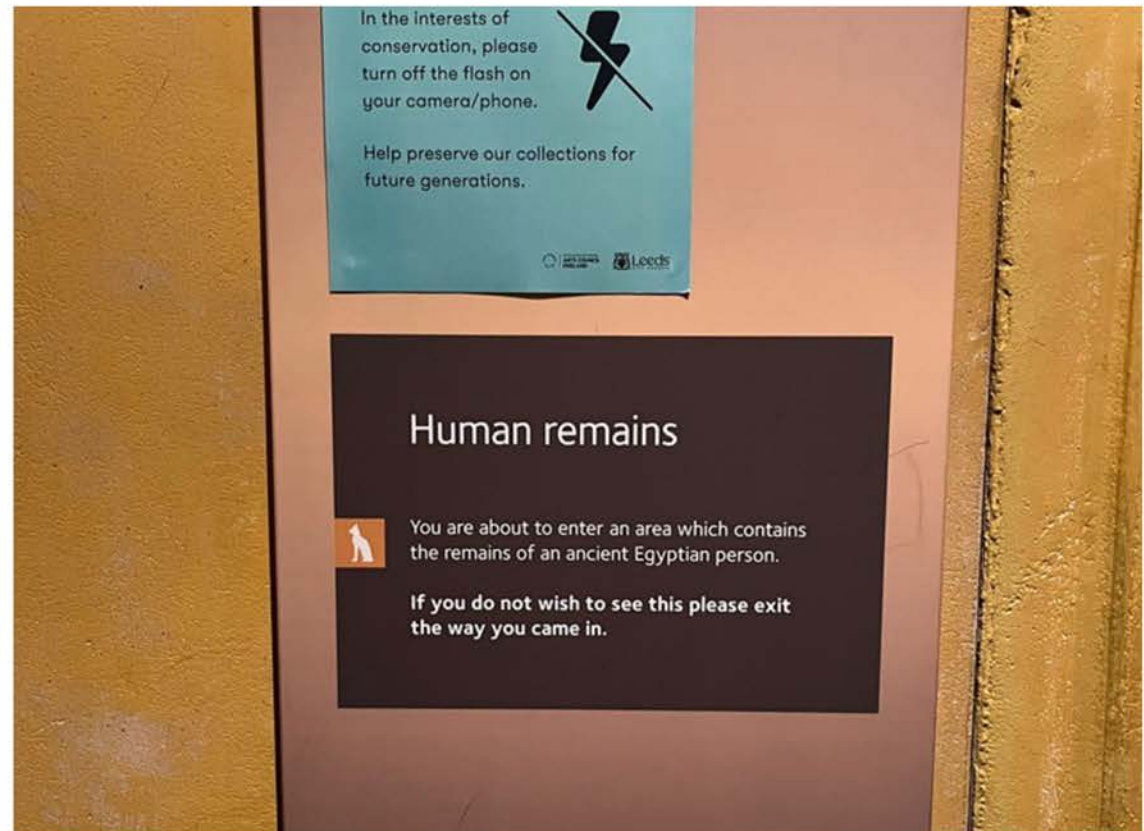


In the Ancient Worlds gallery...

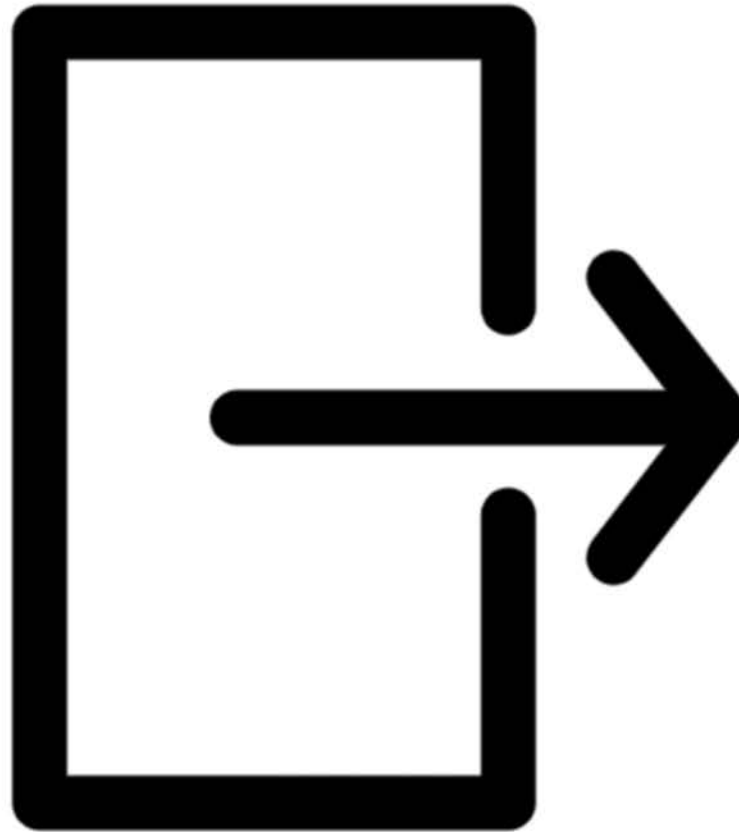
There are the human remains of a mummified person.



I can choose if I want to see these or not.



When I want to leave the museum...





When I want to leave the museum...

I can take the stairs or the lift to the ground floor.





When I want to leave the museum...

I should leave using one of the sets of double doors.

