

Collections in Dialogue: Artist Co-Commission
British Library in partnership with Leeds Art Gallery



LEEDS
ART
GALLERY

Contents:

• Introduction	2
• The Partners	3
• The Collections	4
• The Commission	6
• Fee and Budget	7
• Application	7
• Deadline	8
• Selection Process	8
• Appendix	9

Introduction

The British Library and Leeds Art Gallery seek to commission an artist or artist collective based in the Yorkshire and Humber area.¹ This commission will culminate in the creation of new work by the artist to be exhibited at Leeds Art Gallery from May to October 2027.

The selected artist or artist collective will be invited to engage with collections at the British Library and Leeds Art Gallery as a catalyst to produce new work that creates a dialogue between them. The focus will be on exploring the collection of artists' books held at the British Library alongside works in Leeds Museums and Galleries' sculpture collection that employ the medium of the book as a raw sculptural material or incorporate text within the sculptural object. The collection of artists' books in the Henry Moore Institute Research Library Special Collections will also be available to access. Further information about these collection areas is detailed below.

The commissioned work should seek to link the collections in some way – through medium, concept, theme or otherwise. We are open to proposals from artists working in any medium. It is anticipated that the new work produced will include an artist's book or books in an edition. However, this does not necessarily need to form the main focus of the work produced and we are interested in responses which include outcomes across different media, both physical and digital. Proposals are welcome from those who have not previously produced artists' books as part of their practice but have a demonstrable interest in the medium. As part of the final exhibition the commissioned artist or artist collective will have the opportunity to select items from the collections for display alongside their own work.

The artist fee for the project is £11,000 and there is a budget of £9,000 for materials to realise the project, along with additional resources to cover other expenses. If an artist collective is successful, the fee is to be split equally among all members. Any collective will need to be contracted either through a named lead individual or with a formally constituted organisation, i.e. a Community Interest Company (CIC) or a Company Limited by Guaranteed charitable status (CLG). Further information can be found on the Government website at [this hyperlink](#).

There will be a research, development and production period from October 2025 to March 2026 (on a part-time basis). This will be divided

¹ The artist should have resided at their main residential address in the Yorkshire and Humber region for at least one year.

into two phases:

Oct 2025 – Feb/March 2026 – research and engagement with the collections of the partner organisations, development of ideas, selection of collection items to focus on.

April 2026 – April 2027 – development and production of new works, development of final exhibition and interpretation with institutional partners.

Applications are especially encouraged from Disabled and LGBTQA+ practitioners, ethnically diverse artists who may identify as black, brown, people of colour or global majority. We also encourage applications from those who have experienced disadvantages due to their socio-economic background or who have otherwise faced barriers to a career in the arts

The commission will form the third iteration of the Collections in Dialogue artist co-commission project between the British Library and Leeds Art Gallery. Previous recipients of Collections in Dialogue are Jill McKnight (2021/22) and Karanjit Panesar (2023/24).

Collections in Dialogue is part of the British Library's growing culture programme in West Yorkshire which is home to one of the Library's two sites at Boston Spa near Wetherby.

The Partners

The British Library

We are the national library of the UK and we are here for everyone. Our shelves hold over 170 million items – a living collection that gets bigger every day. Although our roots extend back centuries, we aim to collect everything published in the UK today, tomorrow and far into the future. Our trusted experts care for this collection and open it up for everyone to spark new discoveries, ideas and to help people do incredible things. We have millions of books, and much more besides. Our London and Yorkshire sites hold collections ranging from newspapers and maps to sound recordings, patents, academic journals, as well as a copy of every UK domain website and blog. Our public spaces provide a place to research, to meet friends, to start up a new business or simply to get inspired by visiting our galleries and events. We work with partners and libraries across the UK and the world to make sure that as many people as possible have the chance to use and explore our collections, events

and expertise. And we're always open online, along with more and more of our digitised collection.

See: www.bl.uk

Leeds Art Gallery

Founded in 1888 as a civic art gallery, Leeds Art Gallery has strong collections of 19th and 20th century British painting and sculpture, widely considered to be one of the best outside national collections. Alongside an extensive painting and sculpture collection, the gallery holds a significant collection of moving-image work. To accompany the collection Leeds Art Gallery presents a dynamic and diverse programme comprising exhibitions, commissions, acquisitions and projects by artists whose work is globally significant and locally relevant. In recent years, Leeds Art Gallery has launched British Art Show 8, established Yorkshire Sculpture International, presented Sonia Boyce's award-winning *Feeling Her Way* from the Venice Biennale and has co-commissioned major moving-image works.

Leeds Museums and Galleries has a long-established partnership with the Henry Moore Foundation, which began with the development of the Sculpture Study Centre in Leeds Art Gallery in 1982 and led to the development of the Henry Moore Institute in 1993. This special relationship represents an unparalleled collaboration in the collection, study and presentation of sculpture. The Leeds Sculpture Collections lies at the heart of their work together, underpinned by the complimentary research and curatorial expertise of both organisations.

See: [Leeds Art Gallery | Leeds Museums and Galleries](#)

The Collections

The focus will be on the artist or artist collective engaging with the following key aspects from the collections of the partner institutions:

Artists' Books at the British Library

The British Library collects artists' books and fine press publications

from the UK. Our collections also include many important works from the Americas and Europe.

Artists' books show great variety, innovation and experimentation. Our collections focus on the use of text and narrative, but also include visual arts and collaborative works between artists and poets. Creative collaborations and dialogues in artists' books can be found across our collections of fine press publications, which focus particular attention to art and craftsmanship in book production.

The Library holds the largest collection of artists' books in the UK.

Further information on artists' books at the British Library and how to research them can be found in the PDF enclosed with the application pack.

Sculpture and Artists' Books at Leeds Art Gallery and the Henry Moore Institute

Since the establishment of the partnership between Leeds City Council and the Henry Moore Foundation first began in 1982, Leeds has gained a reputation as an international centre for the study and appreciation of sculpture. At the heart of this collaboration are the Leeds Sculpture Collections which are managed in partnership between Leeds Museums and Galleries and the Henry Moore Institute. This collaboration has created one of the strongest collections of British sculpture in the world. Based at Leeds Art Gallery, the Leeds Sculpture Collections include finished sculptures, maquettes, models, works on paper and an Archive of Sculptors' Papers housed at the Henry Moore Institute. The collections are principally British from c.1875 to the present day, with a particular focus on twentieth and twenty-first century works and an emphasis on diversifying the collection through new acquisitions. They seek to narrate the development of sculpture being made in Britain over the last century as broadly as possible by representing neglected practitioners as well as established ones, by incorporating monumental and architectural sculpture by means of drawings, maquettes and archival material, and by using the works on paper collection to represent the scope of contemporary practice alongside acquisitions of three-dimensional work. Today the collections continue to develop, with a priority to address historical imbalances and increase holdings of work by underrepresented practitioners to better represent the wealth and diversity of sculptural practice across an expanded field.

The commissioned artist will be able to explore and engage with the collections of sculpture and sculptors' works on paper housed at Leeds Art Gallery and artists' books from the Henry Moore Institute Research Library Special Collections. A selection of works from the sculpture collection are available to view online via Art UK: [Art UK | Discover Artworks](#)

Further information about the Henry Moore Institute Research Library Special Collections can be found here: [Research library special collections](#)

A selection of artists' books held in the Library can be accessed here: [Artists' books from the collection](#)

Selected artists' books from the collection have also been digitised via YouTube:

[Yoko Terauchi 'Ebb & Flow' 1988](#)

[Keir Smith 'Ceres' 1980](#)

[Tea 'By The Way' 1999](#)

The Commission

- We are open to artists working in a range of media, including the digital, as long as the final outcome includes an artist's book or books in an edition. It should be noted that in line with this medium, this does not have to be a 'book' in the traditional sense. The final exhibition will take place in the Lyons Galleries at Leeds Art Gallery (see appendix for gallery floorplan).
- The artist will be expected to develop a final proposal for the work and exhibition following the research phase.
- The first part of the commission will involve the selected artist or artist collective exploring the collections and contextual information about them, supported by staff from the respective organisations. We will enable physical access to collections in Yorkshire and London and digital access where possible.
- We are open to applications from early or mid-career artists. We seek to commission an artist or artist collective able to manage the scale and nature of the project and for this to be of benefit to the further development of their practice and career. Please note, this is not an

artist development programme.

Fee and Budget

- Artist fee: £11,000 (to be paid in instalments and inclusive of any VAT or other taxes that may arise).
- Materials/production/exhibit realisation budget: £9,000 (this budget can also be used for the rental of equipment or production spaces, access to software or specialist technical support required for the production of the work).
- Travel funds are available for the artist to undertake visits to Leeds Art Gallery, the Henry Moore Institute and the British Library sites. Additional travel funds to undertake visits to other sites in the UK may be agreed on a case-by-case basis if relevant to the project.
- Funding is available to cover accessibility needs that may arise for the artist in the delivery of the project.

Application

Please include the following information and documentation:

- An artist's CV including name, contact details, past exhibition history and name and contact details of two referees who you have worked with previously. If applying as a collective please submit all artists' CVs.
- Up to 10 images of your past or current work (including titles and dates).
- A proposal of up to 500 words or a 5-minute video outlining:
 1. why you are applying for this project, including examples of aspects of the above named collections that are of particular interest to you. The application pack contains more details on the collections.
 2. A summary of how you would approach the project.
 3. What the potential creative outcomes will be and how they will be presented in the gallery [we understand this is provisional at this stage].

Please submit proposals and supporting documents using the form on the website. If you face any barriers to using these methods or require assistance with the application process, please contact Clare Nadal, Assistant Curator, Sculpture clare.nadal@leeds.gov.uk or Elizaveta Butakova, Curator of Exhibitions Elizaveta.Butakova-Grimshaw@leeds.gov.uk

Deadline

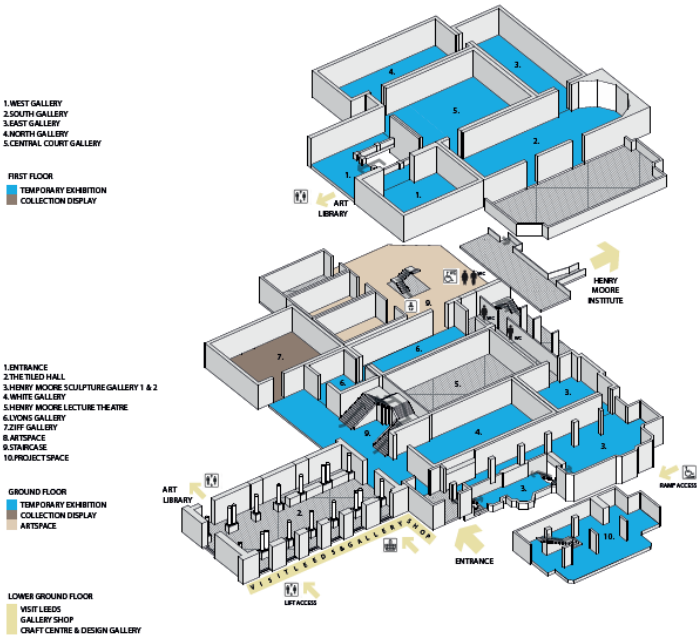
The deadline for proposals is Friday 29 August 2025 at 9am.

Interviews for shortlisted artists will be held on Tuesday 16 September 2025.

Selection Process

- Shortlisted artists will be invited to interview, where they will be asked to prepare a 10-minute presentation about their proposal to a panel of selectors including organisational staff from Leeds Art Gallery, the British Library and the Henry Moore Institute. Presentations should be sent at least 24 hours before the interview and should include a proposed outline breakdown of the artwork production budget. Artists invited to interview will be paid £400 for their time, to be invoiced after interview.
- Interviews will take place in person or online.
- Artists invited to interview will be asked about their access and support needs. Funding is available to cover access requirements such as BSL interpretation, taxi fares, communication support or any reasonable adjustments. Interview questions will be shared in advance.
- If you have any questions, please contact Clare Nadal, Assistant Curator, Sculpture clare.nadal@leeds.gov.uk or Elizaveta Butakova, Curator of Exhibitions Elizaveta.Butakova-Grimshaw@leeds.gov.uk

Appendix – Gallery Plan showing the Lyons Galleries, Leeds Art Gallery

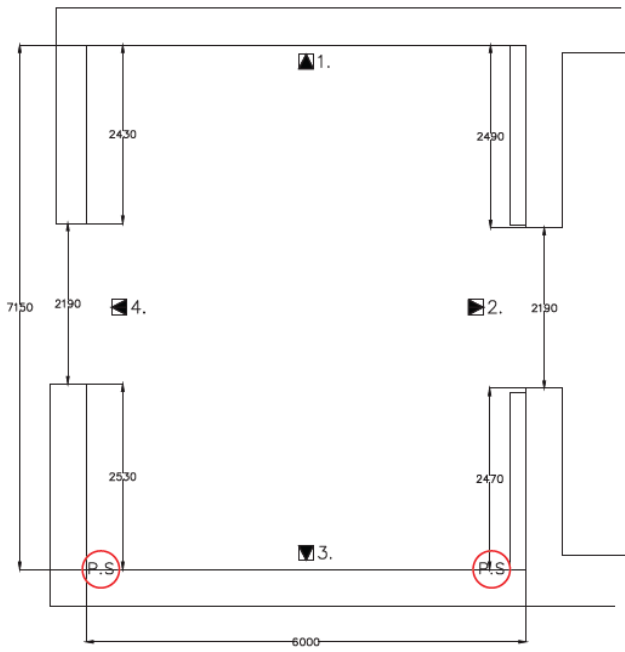


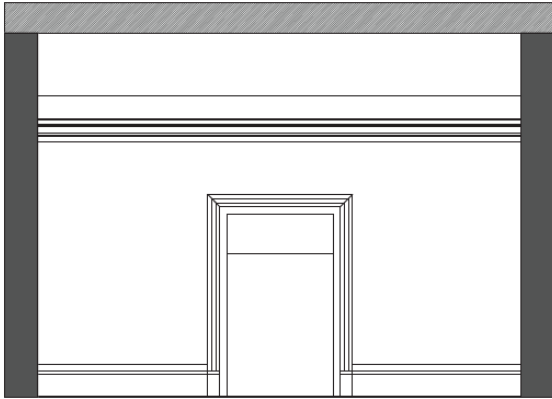
GRAPHIC DIAGRAM

PAGE	REF.	NAME	SCALE	DESCRIPTION	ISSUE DATE
pg.3	GF09	Entrance & Promenade	1:100	Layout	02/01/2013
pg.4	GF02	Tiled Hall	1:100	Layout	07/03/2014
pg.5	GF03	Sculpture Gallery (large & lower)	1:100	Layout	26/05/2015
pg.6	GF03	Sculpture Gallery (small)	1:50	Layout	26/05/2015
pg.7	GF04	White Room	1:100	Layout & Elevation(s)	02/01/2013
pg.8 & 9	GF06	Lyons's Gallery (small)	1:50	Layout & Elevation(s)	02/01/2013
pg.10 & 11	GF06	Lyons's Gallery (large)	1:50 & 1:100	Layout & Elevation(s)	02/01/2013
pg.12-14	GF07	Ziff Gallery	1:50	Layout & Elevation(s)	20/08/2017
pg.15	GFA	Loading Area A	1:50	Layout	06/04/2019
pg.16	GFB	Loading Area B	1:50	Layout	06/04/2019
pg.13	FF01	West Gallery Landing	1:50	Layout & Elevation	17/09/2017
pg.14	FF01	West Gallery	1:100	Layout & Elevation(s)	17/09/2017
pg.15	FF02	Silver Gallery	1:100	Layout & Elevation(s)	02/01/2013
pg.16	FF03	Sam Wilson Gallery	1:100	Layout & Elevation(s)	02/01/2013
pg.17	FF04	North Room	1:100	Layout & Elevation(s)	02/01/2013
pg.18	FF05	Central Court	1:50	Layout	02/04/2018

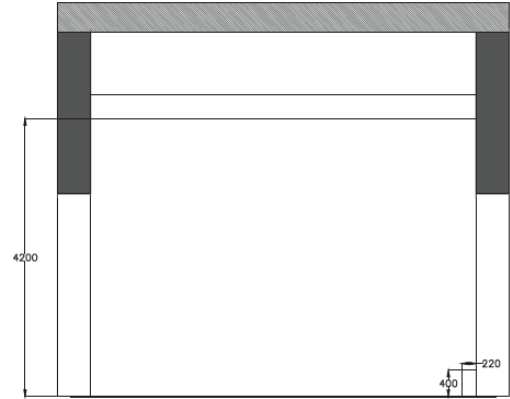
NOTE: DO NOT SCALE PAPER WHEN PRINTING. 100% ZOOM ONLY.
ALL DRAWINGS ARE A3 PAPER SIZE.
DRAWINGS NOT FOR CONSTRUCTION USE.
RECOMMENDED TO USE A SCALE RULE IN EITHER 1:50 OR 1:100 SCALE.

DRAWING REGISTER





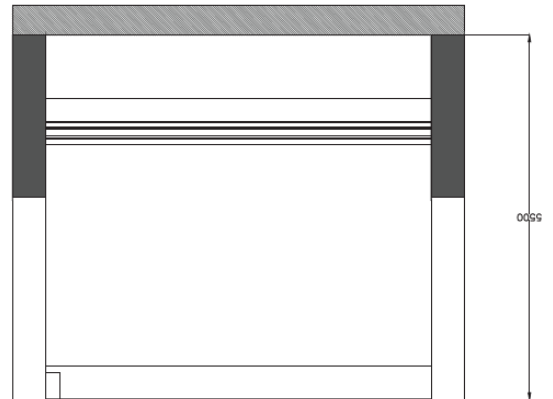
2.



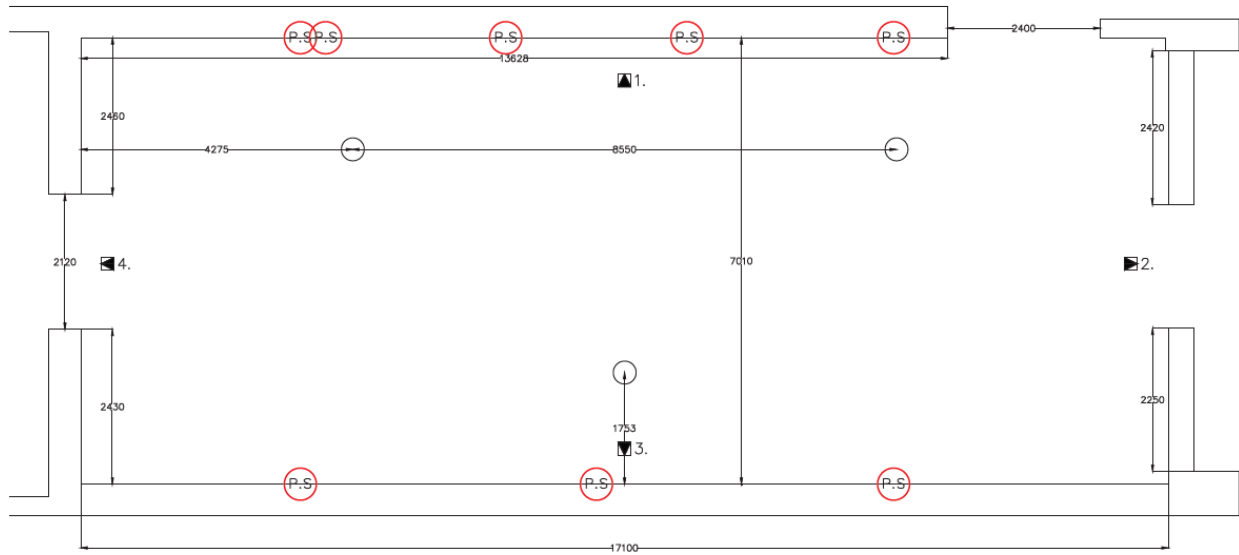
1.



2.



1.



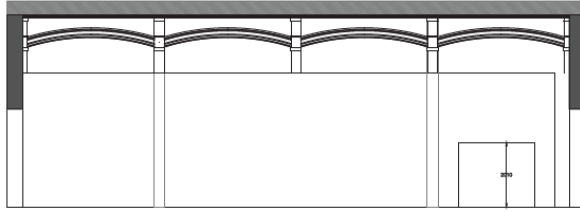


圖 1.

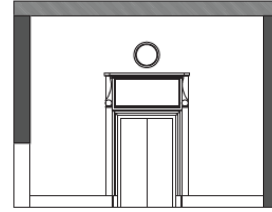


圖 2.

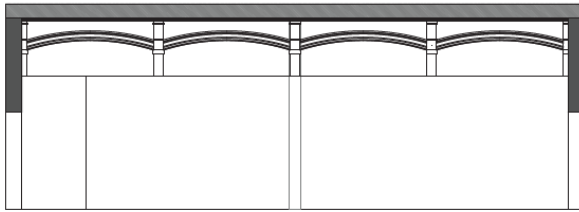


圖 3.

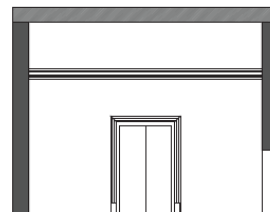


圖 4.